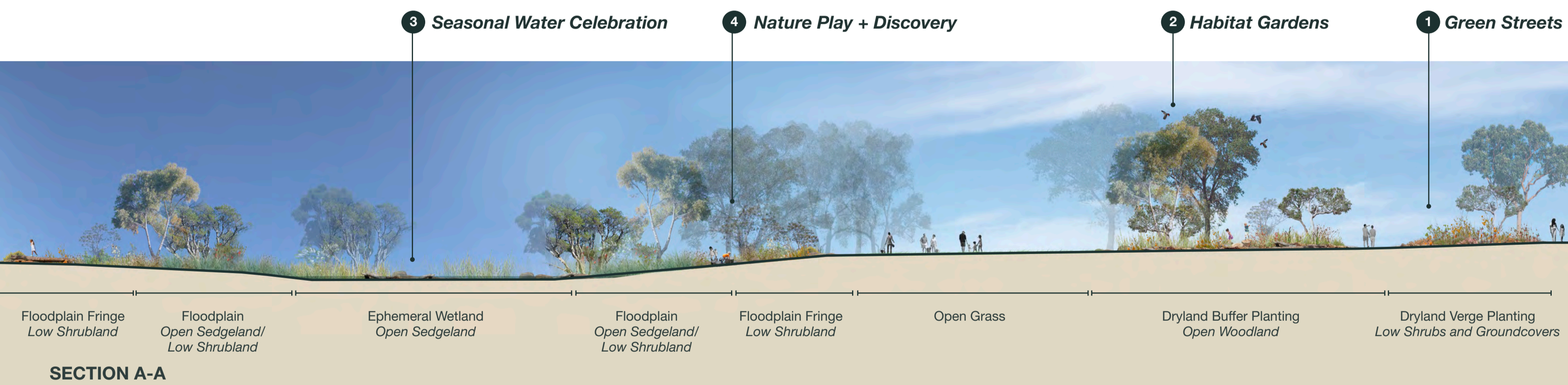


Our Park, Our Place strengthening connections beyond the park and into the community, collaboratively building cooling, biodiverse urban green places.

LEGEND

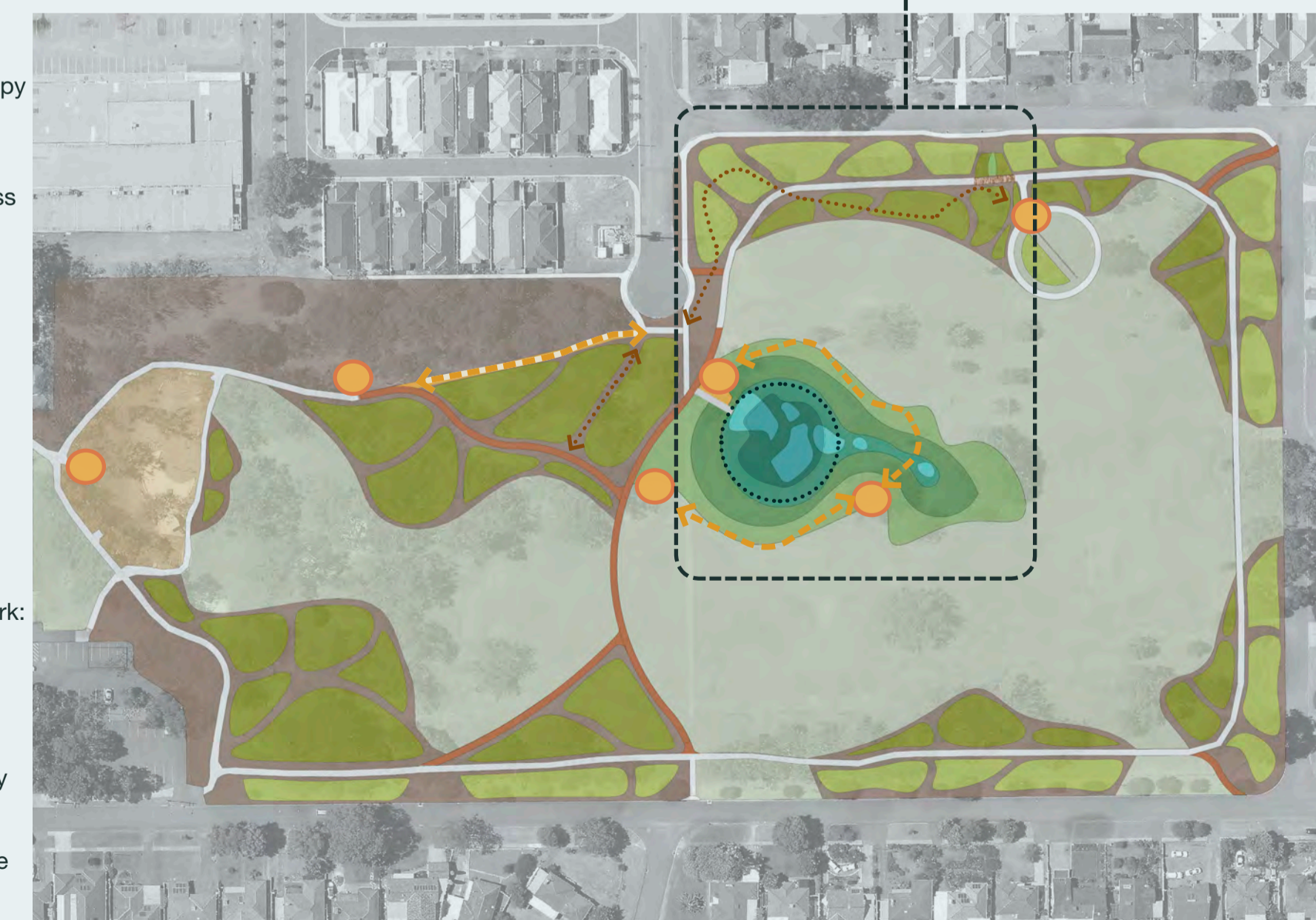
- Green Streets**
Create continuous shady canopy of trees with understorey of biodiverse flowering shrubs and groundcovers along verges, park perimeters and streetscapes. To learn more on how you can take part in this, see Town of Bassendean's website including their *Verge Treatment Guidelines*, and *Adopt A Tree Program*, and Water Corporation's *Creating a Waterwise Verge*.
- Habitat Gardens**
Create waterwise landscaping with hydrozoning, reducing grassed and paved areas and replacing with native plants, mulched areas, rocks and logs for habitat creation, including log hollows, bird baths and insect hotels amongst the plantings.
- Seasonal Water Celebration**
Integrate basin into parkland, improve amenity and enhance habitat and water quality by transforming the stormwater basin into a seasonal vegetated wetland. Introduce swathes of rushes and sedges and small groupings of melaleucas. To learn more about how the Town is integrating stormwater drains and basins into parklands and how you can integrate water and reduce stormwater runoff, see Water Corporation's *Drainage for Liveability Program*.
- Nature Play + Discovery Trail**
Create shady rest and pause points with intermittent seating along a nature-based play trail, integrating interpretive art, rocks and logs to explore, and provide habitat for local wildlife. Integrate environmental and cultural interpretation at key locations, sharing knowledge and enhancing connection and understanding of the site and surrounds.
- Cultural Heritage**
Work with local traditional owners to celebrate and share the cultural heritage of the park. Consider knowledge sharing through plantings and artwork for story telling across entire park, including enhancing and improving integration of the learning circle and sorry day planting.
- Open Grass**
Consolidate underutilised areas of grass and retain large open areas for diverse activities and users. Transition park perimeter, verges and poor quality grass areas to native planting.



MARY CRESCENT RESERVE CONCEPT PLAN

Future stages and projected works timeline to be determined pending approval and funding.

- Green Streets**
Create shady streets and park surrounds with diverse native planting and large canopy trees
- Habitat Gardens**
Consolidate underutilised/poor quality grass and transition to native planting beds
- Seasonal Water Integration**
Integrate + enhance visual amenity and habitat value of stormwater basin
- Nature Play + Discovery Trail**
Create connected discovery trail and play nodes, integrating pause points and environmental and cultural interpretation, acknowledging Indigenous history of the area
- Connection + Access**
Provide accessible, connected path network:
Realigned central path, universal access
Crushed stone/mulch pathways
Informal mulch clearings/nature trails
- Remnant Vegetation**
Protect and enhance. Mulch to understorey
- Open Grass**
Retain large open areas of grass for diverse activities, including off leash dog area



OUR PARK, OUR PLACE

MARY CRESCENT RESERVE, EDEN HILL - CONCEPT DECEMBER 2020

